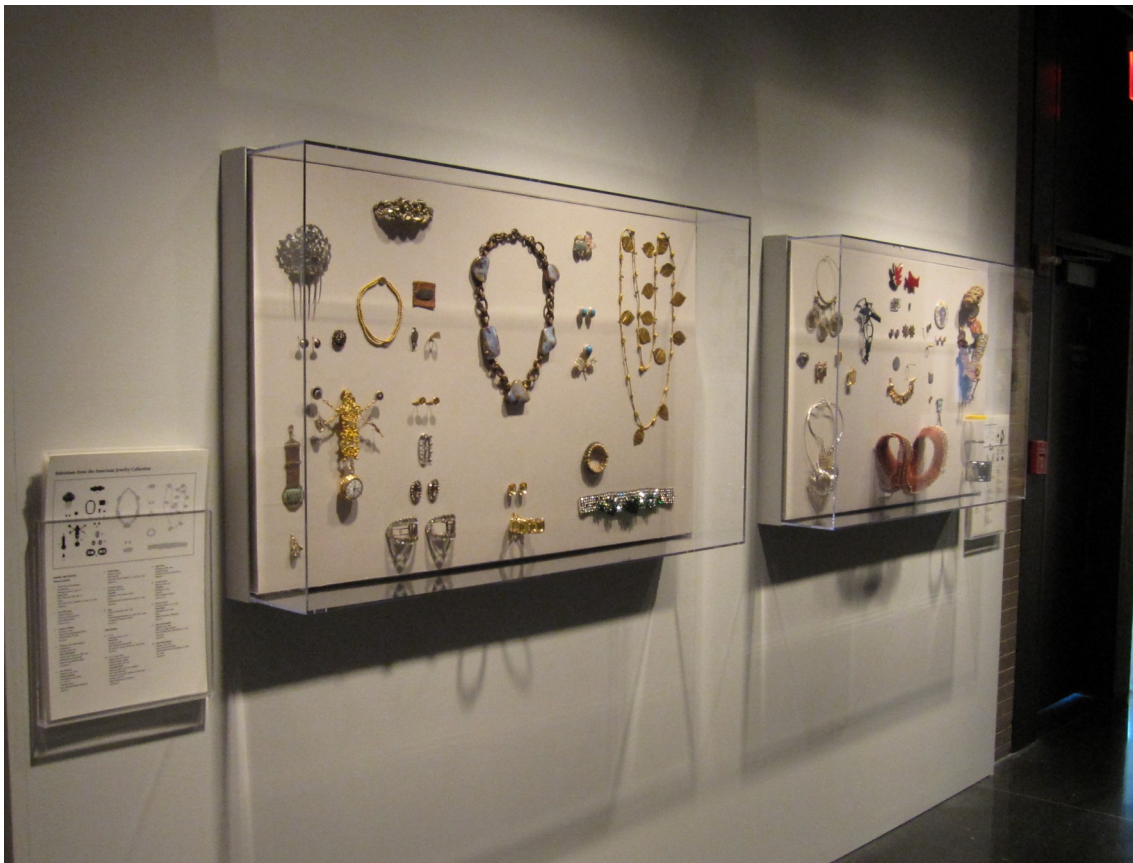


Wall Cases



SMALLCORP
THE SMALL CORPORATION

Products for the Display, Conservation and Storage
Of Works of Art, Textiles and Objects

The **Classic Wall Case** is an attractive, secure and affordable way to present your objects and works of art. The clear acrylic vitrine is secured to the frame with screws and lifts off the powdercoated aluminum frame for easy access to the object chamber. The mounting deck and object shelf can be ready-to-paint, painted, or laminated and can include an internal label rail. The Classic Wall Case is not sealed or archival.



For more sensitive objects, the **Sealed Wall Case** offers microclimate protection and externally accessible silica gel chambers. It is fabricated from 100% archival materials and can include options such as a pinnable ethafoam deck, dimmable, color-adjustable LED lighting and motion sensors. This case can be configured with a traditional 5-sided vitrine, or a 4-sided vitrine with fixed bottom shelf.

The **Hinged Sealed Wall Case** is a sealed 100% archival microclimate case offering maximum protection for sensitive objects, textiles and works of art. The vitrine opens on a heavy-duty hinge to allow access to the removable deck and object chamber. The silica gel chamber is accessible from outside the case, without removing your object. These cases can be customized to meet your exhibit and archival requirements.



(Shown with optional angled deck)

		Classic Wall Case	Sealed Wall Case	Hinged Sealed Wall Case
Vitrine	Museum Quality Vitrine	standard	standard	standard
	UV-Filtering Vitrine	optional	optional	optional
	Optium Museum Acrylic Vitrine	optional	optional	optional
	Lift-Off	standard	standard	
	Hinged			standard
Archival Components	100% Archival Materials		standard	standard
	Sealed Microclimate		standard	standard
	Silica Gel Compartments		standard	standard
	Exchange Rates Less Than 1/day		standard	standard
	Exchange Rates Less Than .1/day		optional	optional
Basics	Powdercoated Aluminum Frame	standard	standard	standard
	Integrated Hanging System	standard	standard	standard
	Security Screws	optional	standard	
	Keyed Locks			standard
Deck	Painted Medex	optional	optional	optional
	Angled		optional	optional
	Laminate	standard		
	Archival Linen-wrapped		standard	standard
	Archival Linen-wrapped, Pinnable		optional	optional
	Object Shelf	standard	optional	
Label Rails	Internal	optional		
	Wall-Mounted	optional	optional	optional

Since 1972, SmallCorp has been a leader in the design and manufacture of archival museum exhibit cases and museum quality picture frames.

We are a vertically integrated manufacturer working in acrylic, glass, metal, wood and textiles to create archival and durable exhibit solutions. Our capacity ranges from our line of standard frames and cases to customer designed projects, whether it is one piece or hundreds. Our goal is to work with the conservation, exhibition and artistic communities to make the highest quality products at a reasonable price. We believe collaboration creates value both for our clients and for their audiences.

We are proud to say our products are hand-made in Massachusetts with solar power.



Capabilities

- Acrylic fabrication
- Aluminum and steel welding and finishing
- Cabinet work
- Fabric Lamination
- Powder coating and painting
- Sheet metal fabrication
- CNC sawing and routing
- LED and Fiber optic lighting

Unique Areas of Expertise

- Archival materials, adhesives and coatings
- Construction of sealed exhibit cases with air exchange rates as low as .02/day
- Design / construction of engineered picture framing and exhibit case solutions for small to very large objects
- Protection of objects from UV light damage



Classic Wall Case



Sealed Wall Case with powdercoated aluminum frame and fabric-wrapped display deck.



Hinged Sealed Wall Case with powdercoated frame, rolling base and fabric-wrapped deck.