

LED Case Lighting



SMALLCORP
THE SMALL CORPORATION

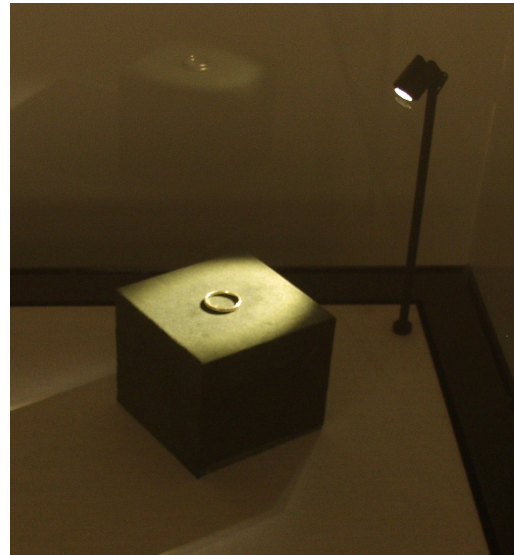
Products for the Display, Conservation and Storage
Of Works of Art, Textiles and Objects

LED Lighting offers many benefits. Unlike other case-lighting options, there are no noisy fans, because minimal heat is generated. There is a dramatic reduction of energy consumption, and no UV-generation. When coupled with motion sensors, exposure of objects to light can be substantially reduced. Additionally, they are simple to install and rarely need servicing - at full power we expect 40,000 hours of operation. Most museum applications require far less than full power.

SmallCorp LED products are sold as accessories with our cases. They are not stand-alone products.

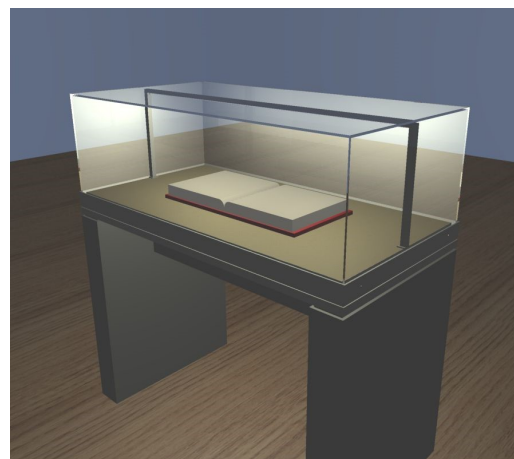
SmallCorp LED Spotlights Our stylish and low-profile spotlights are available in color temperatures from “Warm”/2700°K to “Cool”/6000°K. We provide an interchangeable optics kit that allows you to adjust the beam from flood to spot. Spotlights mount on slim aluminum posts (standard and custom lengths available) or on magnetic bases, and feature an adjustable head angle and multiple mounting options.

A typical starter kit might include: one spotlight with mounting post, a universal mount or steel base weight, and a power supply/controller/driver unit.



SmallCorp LED Lightbars Our proprietary design can integrate continuously adjustable color temperatures from “Warm”/2700°K to “Cool”/6000°K, or can have a fixed light level. Our LED lightstrips are housed in an attractive and durable powdercoated aluminum channel with an adjustable lighting angle and multiple mounting solutions.

A typical starter kit might include: one lightbar (sized to fit your case) with two support posts, two universal mounts and a power supply/controller/driver unit.



		Spotlight	Lightbar
Specs & Standards	Individual Colors "Warm" 3000°K to "Cool" 6000°K	standard	standard
	Color-adjustable "Warm" 3000°K to "Cool" 6000°K		optional
	Custom fixed color temperatures	optional	optional
	Adjustable Light Angle	standard	standard
	Optics Kit - Lenses, diffusers, O-rings	standard	
	Light-focusing Snoot	optional	
Power & Control	Power Supply	standard	standard
	Driver	standard	standard
	Dimmer System	standard	standard
	Motion Sensors	optional	optional
Mounting	Mounting Post - multiple lengths available	optional	
	Support Posts (2) - multiple lengths available		standard
	Freestanding Steel Base Weight	optional	
	Universal Through-Deck Mount	optional	
	Magnetic Base	optional	
	Deck-mounting Clamps	optional	standard
Finish	Black Powdercoat Finish	standard	standard
	Brushed Aluminum or Custom Finish	optional	optional



Spotlight with
magnetic base



Spotlight on
Mounting post



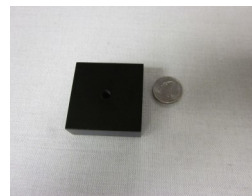
Universal Through
Deck Mount



Deck Mounting
Clamp



Spotlight With
Snoot



Steel Base
Weight

Since 1972, SmallCorp has been a leader in the design and manufacture of archival museum exhibit cases and museum quality picture frames.

We are a vertically integrated manufacturer working in acrylic, glass, metal, wood and textiles to create archival and durable exhibit solutions. Our capacity ranges from our line of standard frames and cases to customer designed projects, whether it is one piece or hundreds. Our goal is to work with the conservation, exhibition and artistic communities to make the highest quality products at a reasonable price. We believe collaboration creates value both for our clients and for their audiences.

We are proud to say our products are hand-made in Massachusetts with solar power.



Capabilities

- Acrylic fabrication
- Aluminum and steel welding and finishing
- Cabinet work
- Fabric Lamination
- Powder coating and painting
- Sheet metal fabrication
- CNC sawing and routing
- LED and Fiber optic lighting

Unique Areas of Expertise

- Archival materials, adhesives and coatings
- Construction of sealed exhibit cases with air exchange rates as low as .02/day
- Design / construction of engineered picture framing and exhibit case solutions for small to very large objects
- Protection of objects from UV light damage



Historic cases at Yale's Beinecke Library retrofitted with LED Lighting



Motion-activated LED case lighting (including drawer lights) and downlighting provide all light for the textile gallery at Museo Chileno de Arte Precolombino