

SMALLCORP

THE SMALL CORPORATION

Products for the Display, Conservation and Storage
Of Works of Art, Textiles and Objects

PEDESTAL MUSEUM CASES

B-Case



C-Case



Y-Case



H-Case



Our *C - Case* is an attractive, secure and affordable way to present your objects and works of art. The museum-quality acrylic vitrine lifts off for easy access to the object chamber. The removable display deck can be painted, laminated or fabric-wrapped and the case can be outfitted with internal or wall-mounted label rails.



The *H - Case* adds a vertical surface for mounting objects and increasing display space. Like the B - Case, it includes a medex pedestal with a powdercoated collar, and a museum-quality vitrine. There are a variety of finish options for the pedestal and deck, and label rails and lighting systems can be easily added. This case can also be upgraded to an archival microclimate version.



The *B - Case* is 100% archival and includes a sealed media chamber below the removable deck. Silica gel access through a dedicated external port is optional so objects in the case do not have to be moved. The vitrine can be securely fastened to the powdercoated collar with security screws or pneumatic locks, and these cases are frequently outfitted with LED lighting systems.



The *Y - Case* is a sealed, 100% archival microclimate case offering maximum protection for sensitive objects, textiles and works of art. There is a locking cabinet below that allows access to the leveling plate and silica gel chamber. These are our most versatile cases and can include motion-activated LED lighting, pinnable and drillable object decks, and in-case security and environmental monitoring.



		C Case	H Case	B Case	Y Case
Vitrine	Museum Quality Vitrine	standard	standard	standard	standard
	UV-Filtering Vitrine	optional	optional	optional	optional
	4 - sided		standard		
	5 - sided	standard		standard	standard
	Screw Locking	standard	standard	standard	standard
	Security Screws	optional	optional	optional	optional
	Pneumatic Locks			optional	standard
Archival Components	100% Archival Materials		optional	standard	standard
	Sealed Microclimate		optional	standard	standard
	Silica Gel Compartments		standard	standard	standard
	Exchange Rates Less Than 1/day		standard	standard	standard
	Exchange Rates Less Than .1/day		optional	optional	optional
Pedestal	Powdercoated Aluminum Collar		standard	standard	standard
	Storage Cabinet; Hinged Access Door				standard
	Leveling Feet		standard	standard	
	Internal Leveling Plate				standard
	Ready to Paint	optional	optional	optional	optional
	Painted Finish	optional	optional	optional	optional
	Laminate	optional	optional	optional	
	Wood Veneer	optional	optional	optional	
	External Silica Gel Access Door		optional	optional	standard
	Cam Locks				optional
	Magnetic Locks				optional
Deck	Dibond		available with any case		
	Powdercoated Aluminum				
	Painted Medex				
	Fabric-wrapped				
	HDPE				
	Pinnable				
Electronics	Motion Sensors		available with any case		
	Dimmable LED Spotlights				
	Dimmable Color-Adjustable LED Lightbars				
	Battery-powered				
	RH Conditioning Systems				
	Security & Condition Monitoring				
Label Rails	Internal		available with any case		
	Wall-Mounted		available with any case		
	External		optional	optional	optional

Since 1972, SmallCorp has been a leader in the design and manufacture of archival museum exhibit cases and museum quality picture frames.

We are a vertically integrated manufacturer working in acrylic, glass, metal, wood and textiles to create archival and durable exhibit solutions. Our capacity ranges from our line of standard frames and cases to customer designed projects, whether it is one piece or hundreds. Our goal is to work with the conservation, exhibition and artistic communities to make the highest quality products at a reasonable price. We believe collaboration creates value both for our clients and for their audiences.

We are proud to say our products are made in the USA with solar power.

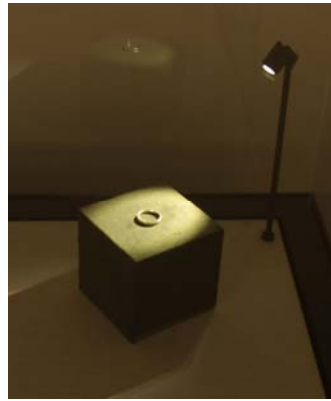


Capabilities

- Acrylic fabrication
- Aluminum and steel welding and finishing
- Cabinet work
- Fabric Lamination
- Powder coating and painting
- Sheet metal fabrication
- CNC sawing and routing
- LED and Fiber optic lighting

Unique Areas of Expertise

- Archival materials, adhesives and coatings
- Construction of sealed exhibit cases with air exchange rates as low as .02/day
- Design / construction of engineered picture framing and exhibit case solutions for small to very large objects
- Protection of objects from UV light damage



All of our cases can be adapted to include dimmable spotlights and dimmable, color-adjustable lightbars with optional motion sensors and/or battery power.

Pneumatic locking systems can be used to secure the pedestal cabinet and the vitrine.



On our Y-Case, the silica gel compartment is accessible from outside the case, without moving your object.

B, Y and H-Cases accommodate internal text rail collars and external label rails that hold 5 inch tall inserts in varying lengths.

