

SMALLCORP

THE SMALL CORPORATION

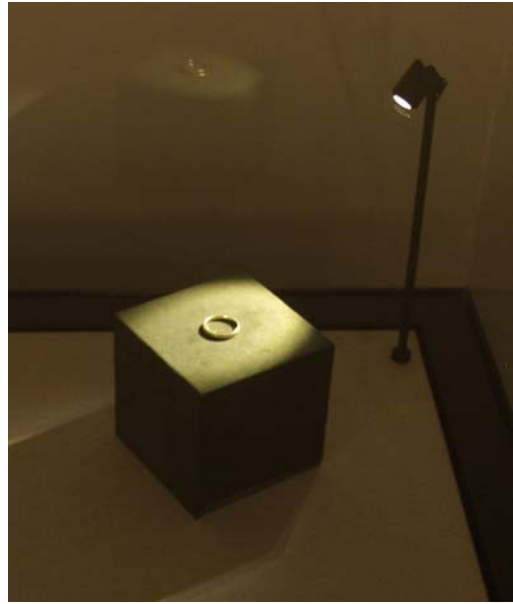
Products for the Display, Conservation and Storage

LED CASE LIGHTING



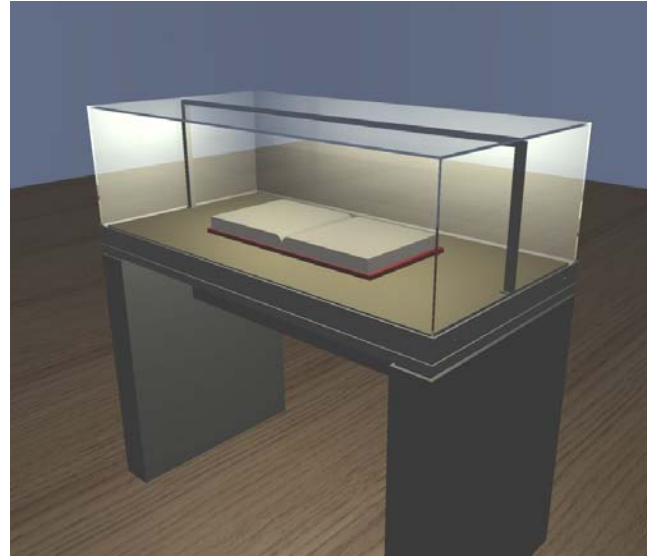
SmallCorp LED Spotlights are stylish and low-profile. They are available in a variety of color temperatures from 3000°K to 6000°K. We provide an interchangeable optics kit that allows you to adjust the beam from flood to spot. Spotlights mount on slim aluminum posts (standard and custom lengths available) or on magnetic bases, and feature an adjustable head angle and multiple mounting options.

A typical starter kit might include: one spotlight with mounting post, a universal mount or steel base weight, and a power supply/controller/driver unit.



SmallCorp LED Lightbars are custom manufactured to integrate continuously adjustable color temperatures from 3000°K to 5000°K. Order them with adjustability, or at a fixed light level. Our LED lightstrips are housed in an attractive and durable powdercoated aluminum channel with an adjustable lighting angle and multiple mounting solutions.

A typical starter kit might include: one lightbar (sized to fit your case) with two support posts, two universal mounts and a power supply/controller/driver unit.



Benefits of LED Lighting

- No noisy fans, minimal heat
- No UV
- Dramatic reduction of energy consumption
- When coupled with motion sensors, light exposure of objects can be substantially reduced.
- Simple installation - much easier than fiber optics
- Long-lasting - At full power we expect 50,000 hours of operation. Most museum applications require far less than full power

		LED Spot Light	LED Light Bar
Specs & Standards	Colors from 3000°K to 5000°K		standard
	Individual Colors from 3000°K to 6000°K	standard	
	Custom fixed color temperatures	optional	optional
	Adjustable Light Angle	standard	standard
	Optics Kit - Lenses, diffusers, O-rings	standard	
	Light-focusing Snout	optional	
Power & Control	Power Supply	standard	standard
	Driver Module (powers up to 6 spotlights)	standard	standard
	Dimmer System	standard	standard
	Multiple Color Temperature Adjustability		optional
	Re-chargeable Battery-power System	optional	optional
	Motion Sensors	optional	optional
Mounting	Mounting Post - multiple lengths available	optional	
	Support Posts (2) - multiple lengths available		standard
	Freestanding Steel Base Weight	optional	optional
	Universal Through-Deck Mount	optional	
	Magnetic Base	optional	optional
	Deck-mounting Clamps	optional	standard
Finish	Black Powdercoat Finish	standard	standard
	Brushed Aluminum or Custom Finish	optional	optional

All of our LED products are custom-made to your specifications, and can include dimming, battery power, and motion sensing capabilities. We can provide our LED lighting solutions as an integrated part of a new case, or in kits for easy retrofitting of existing cases.



Spotlight with magnetic base



Spotlight on mounting post



Universal Through Deck Mount



Deck Mounting Clamp



Spotlight With Snout

Since 1972, SmallCorp has been a leader in the design and manufacture of archival museum exhibit cases and museum quality picture frames.

We are a vertically integrated manufacturer working in acrylic, glass, metal, wood and textiles to create archival and durable exhibit solutions. Our capacity ranges from our line of standard frames and cases to customer designed projects, whether it is one piece or hundreds. Our goal is to work with the conservation, exhibition and artistic communities to make the highest quality products at a reasonable price. We believe collaboration creates value both for our clients and for their audiences.

We are proud to say our products are made in the USA with solar power.



Capabilities

- Acrylic fabrication
- Aluminum and steel welding and finishing
- Cabinet work
- Fabric Lamination
- Powder coating and painting
- Sheet metal fabrication
- CNC sawing and routing
- LED and Fiber optic lighting

Unique Areas of Expertise

- Archival materials, adhesives and coatings
- Construction of sealed exhibit cases with air exchange rates as low as .02/day
- Design / construction of engineered picture framing and exhibit case solutions for small to very large objects
- Protection of objects from UV light damage



Historic cases at Yale's Beinecke Library retrofitted with LED Lighting



Motion-activated LED case lighting (including drawer lights) and downlighting provide all light for the textile gallery at Museo Chileno de Arte Precolombino